



Australian Government

Australian Quarantine and Inspection Service

HITACHI DX40 DOZER



DISCLAIMER

The information provided in this guide merely aims to assist machinery importers meeting the Import Permit Conditions (Clean as New). Importers should note that this guide is not exhaustive and AQIS makes no warranties or representations with respect to the accuracy or completeness of that information and will bear no liability with respect to that information. Importers must satisfy all quarantine concerns and comply with quarantine conditions applicable at the time of entry. The Commonwealth through AQIS is not liable for any costs arising from or associated with decisions of importers to import based on conditions presented here which are not current at the time of importation. It is the importer's responsibility to verify the accuracy and completeness of the information at the time of importation.

Compiled by:
Matt Howard
AQIS Brisbane

The following cleaning/inspection guide has been segmented to facilitate the process. The segmentation is as follows:

1. [Track Frame and Swamp Tracks](#)
2. [Front End, Harmonic Balancers and underside of Engine Bay](#)
3. [Cabin and below Floorpans](#)
4. [Rear End of Dozer](#)
5. [General](#)

Inquiries regarding this document should be directed to:

AQIS

Machinery & Military National Co-ordination Centre

PO Box 222

Hamilton QLD 4007

Phone: +61 (07) 32468706

Facsimile: +61 (07) 32468785

Email: aqis.machinery@aqis.gov.au

© January 2006

Australian Quarantine and Inspection Service

This work is copyright. Apart from any use as permitted under the Copyright Act 1968, no part may be reproduced by any process without written permission from the National Manager, Cargo Management and Shipping, Australian Quarantine and Inspection Service.

Information in this document is correct at time of publishing. Quarantine conditions may change without notice. Please contact AQIS to confirm details.



Australian Government

Australian Quarantine and Inspection Service

1. Track Frame and Swamp Tracks

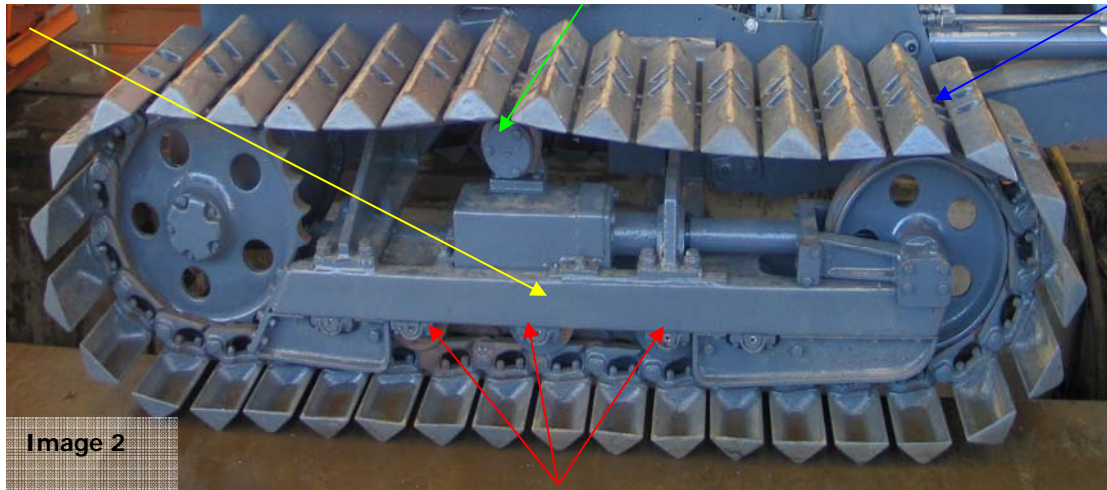


Image 2:

The track frame and swamp tracks as seen on many small dozers. This track frame can be accessed for cleaning and inspection from both the topside and bottom. Each individual roller (red arrows), carrier roller (green arrow), swamp tracks (blue arrow) must be thoroughly cleaned and inspected. The yellow arrow highlights the hollow track channel that must be flushed in the presence of the inspecting officer to verify internal cleanliness.

Image 3:

The hollow track frame highlighted previously, may have drainage holes (red arrows) at the end or along the bottom – see next illustration. Pieces of cork have been placed in these holes, however they still require flushing.

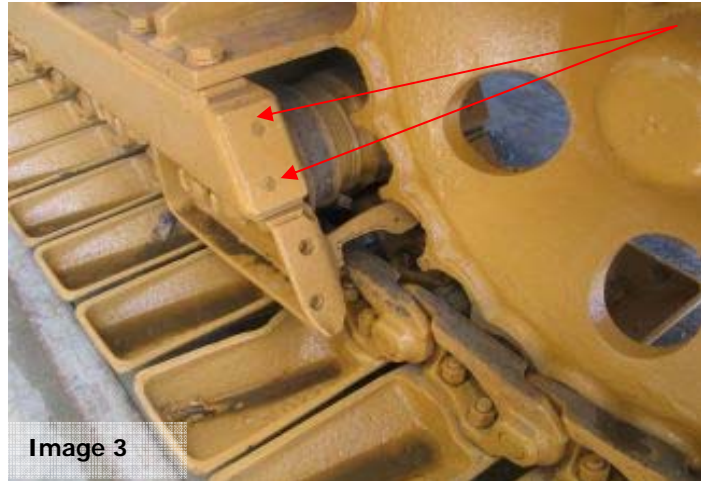


Image 4

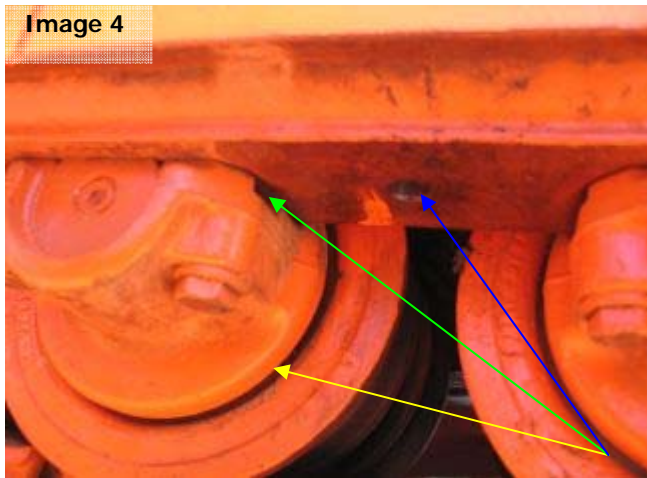


Image 4:

Another way to access the hollow track frame is via the bolt holes (blue arrow) after the rock guards have been removed. Small recesses (green arrow) also require inspection. Flush around the perimeter of the roller (yellow arrow) to verify cleanliness.

Image 5:

Around the bolt heads (red arrow) of each track pad must be thoroughly cleaned and inspected. The tracks must undergo one full revolution at the time of inspection to verify all track pads are free of contamination.

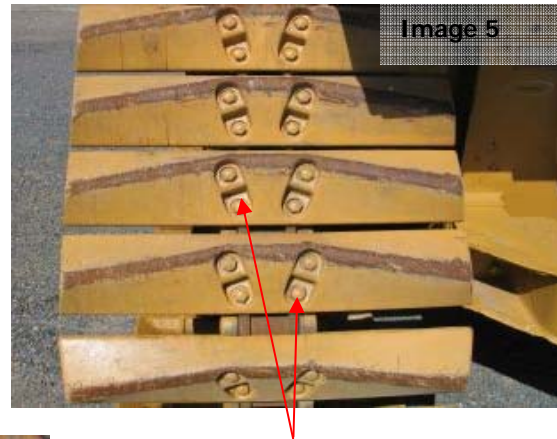


Image 6



Image 6:

All internal surfaces of the track frame must be cleaned and inspected. The small gap between the roller and the frame (red arrows) requires thorough attention.

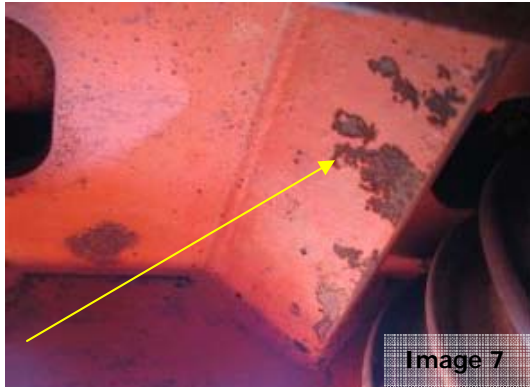


Image 7:

Inside some track frames, V-shaped channels like the one illustrated may be present. These may be sealed units, however they must be verified clean if open from the topside or only spot welded in place.

Image 8:

On some models, the drainage hole for the hollow track frame rail may be on the inside edge as highlighted by the green arrow.

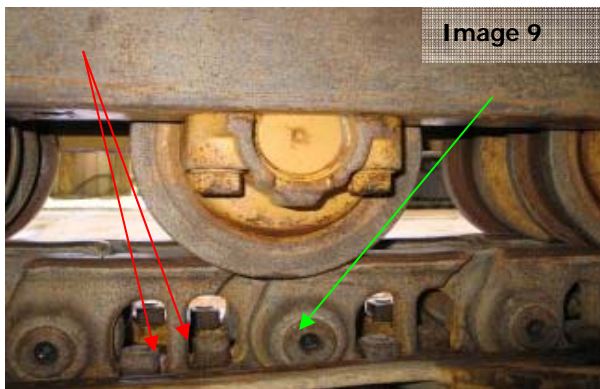


Image 9:

The track nuts (red arrows) and chain links (green arrow) must be thoroughly cleaned and inspected.

Image 10:

All ledges inside the track frame must be clean and verified free of all contamination.

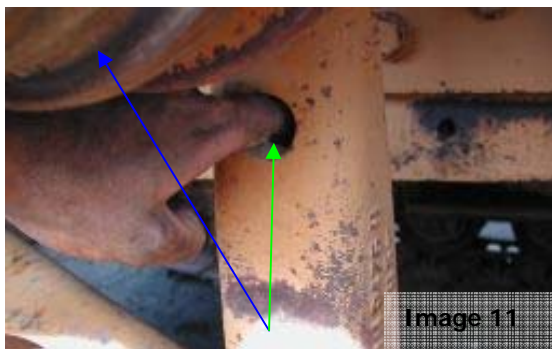
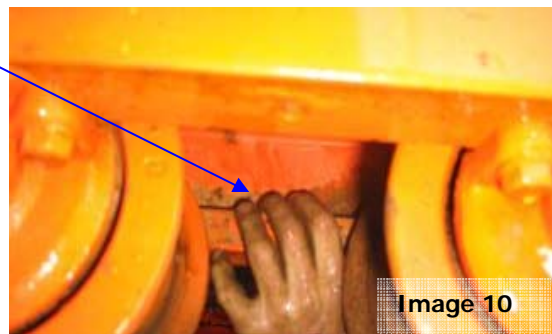


Image 11:

The vertical support for the carrier roller (blue arrow) may be hollow and full of contamination as illustrated (green arrow). All contaminants must be removed and the internal verified at the time of inspection.

2. Front End, Harmonic Balancers and Underside of Engine Bay

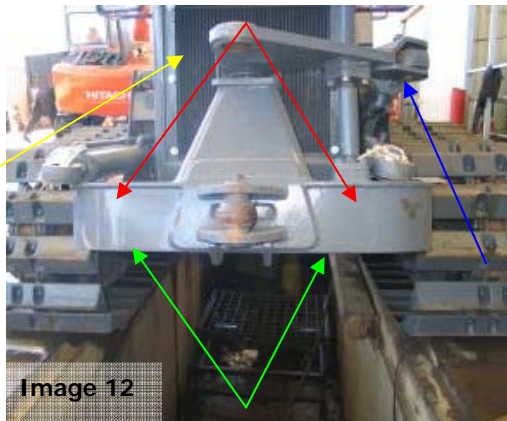


Image 12:

The dozer blade Push Arms (red arrows) may have drainage holes (green arrows) on the underside. Flush to verify cleanliness if present. If sealed, check to verify that all surfaces are free of cracks, splits or evidence of repair. All contaminated grease must be removed from all pivot points. The grill must be removed (yellow arrow) to allow access to the radiator core.

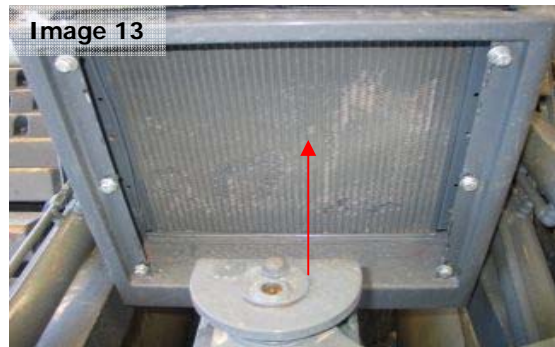


Image 13:

The front of the radiator core. The radiator fins must be flushed to verify cleanliness.

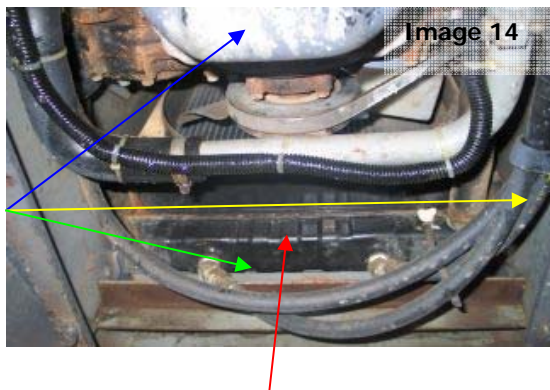


Image 14:

The belly plate has been removed, allowing cleaning and inspection access to the underside of the radiator (red arrow). All ledges (green arrow), hoses and the underside surface of the sump (blue arrow) must be cleaned and free of all contamination.

Image 15:

The bottom half of the internal radiator grill (red arrow) has been removed, allowing cleaning and inspection access to the bottom of the radiator shroud (yellow arrow).

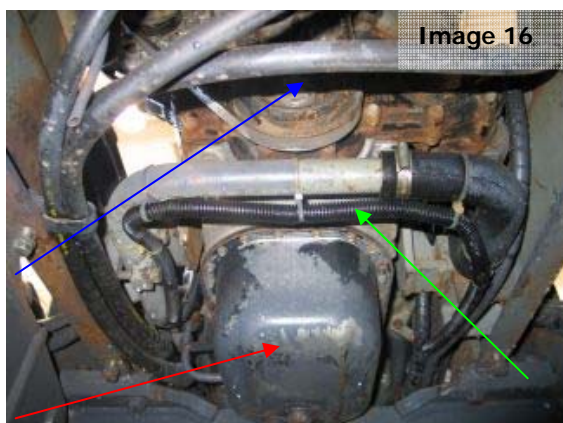
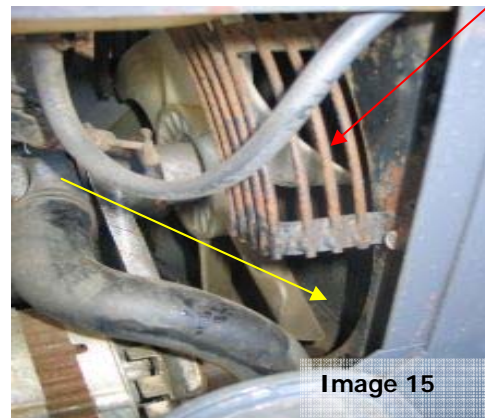


Image 16:

The underside of the engine block and sump (red arrow). All surfaces must be free of all contamination, including dirty grease. The inside of all wiring harnesses (green arrow) and harmonic balancer (blue arrow) must be verified clean.

Image 17:

Just behind the block, the universal joint (red arrow), springs (aqua arrow), ledges (blue arrow), looming (yellow arrow) and countersunk holes (green arrows) must be thoroughly cleaned and inspected.

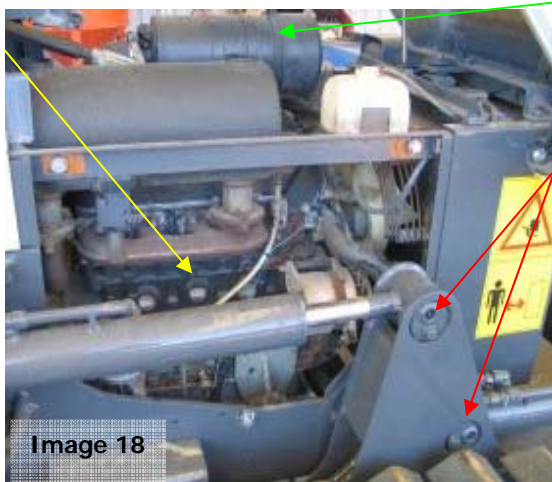
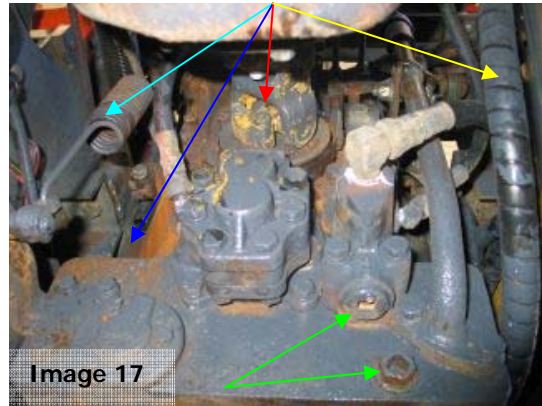


Image 18:

The right hand side of the block. The engine cover and side panels have been removed to allow access for cleaning and inspection. The hydraulic rams and pivot points (red arrows) must have all contaminated grease removed. Remove the air-filter (green arrow) and verify cleanliness. All surfaces of the block are to be thoroughly cleaned and inspected.

Image 19:

The left hand side of the block. The engine cover and side panels have been removed to allow access for cleaning and inspection. The hydraulic rams and pivot points (red arrows) must have all contaminated grease removed. All surfaces of the block (yellow arrow), including oil filters (blue arrow) and hoses (green arrow) must be thoroughly cleaned and inspected.

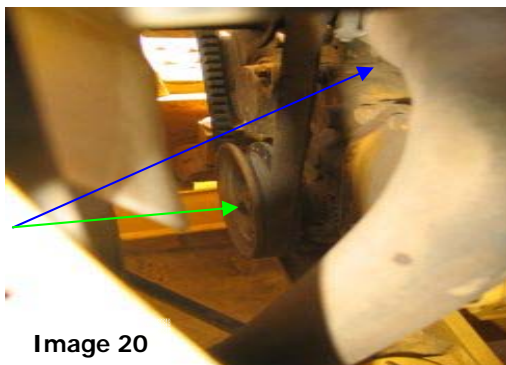


Image 20:

The harmonic balancer (green arrow) and front of the block (blue arrow). Both require thorough cleaning and inspection to verify cleanliness.

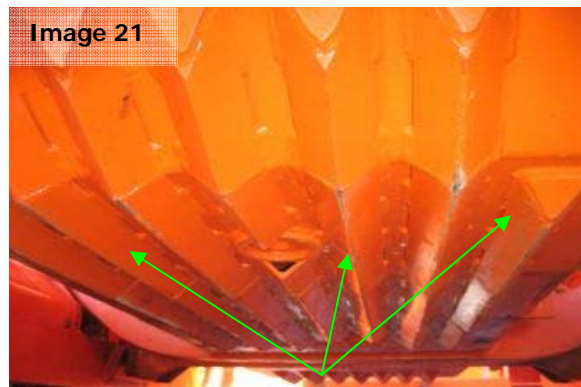


Image 21:

The belly plate of the dozer. All V-shaped gussets (green arrows) are only spot welded and require flushing to verify internal cleanliness

3. Cabin and Below Floorpan

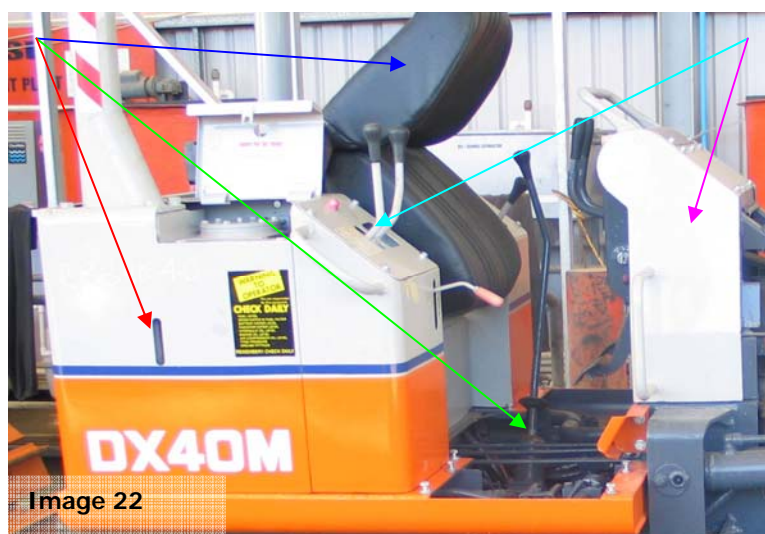


Image 22

Image 22:

A side view of the cabin highlighting fuel cell (red arrow), seat (blue arrow), floorpan (green arrow) and instrument panel (purple arrow). Access to the internal of the joystick control panel (aqua arrow) and instrument panel is required for cleaning and inspection.

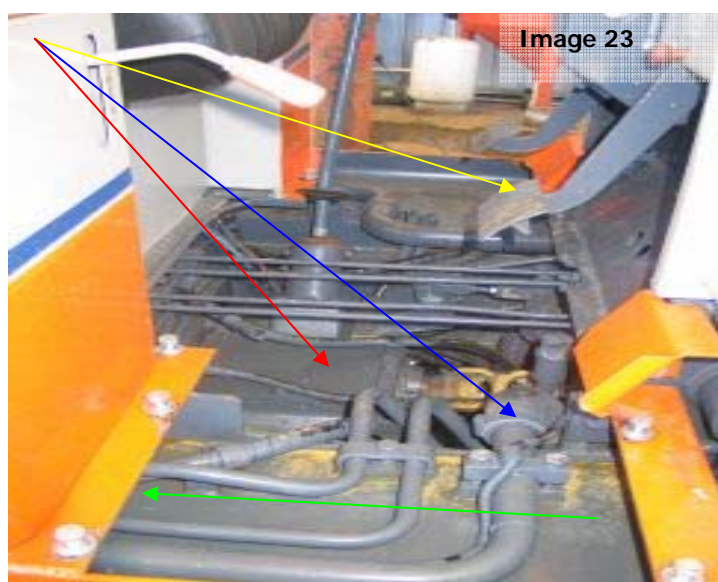


Image 23

Image 23:

The floorpan has been removed to allow access to the topside of the gearbox (red arrow) and hydraulics (blue arrow). These hydraulic lines extend under the fuel cell (green arrow) and this area requires thorough cleaning and inspection. The rubber foot pedal covers (yellow arrow) have been removed for cleaning.

4. Rear End



Image 24:

The rear flap on the dozer opens and the seat lifts forward (red arrow) to provide cleaning and inspection access to the battery box. Ensure that the underside of the seat is clean.

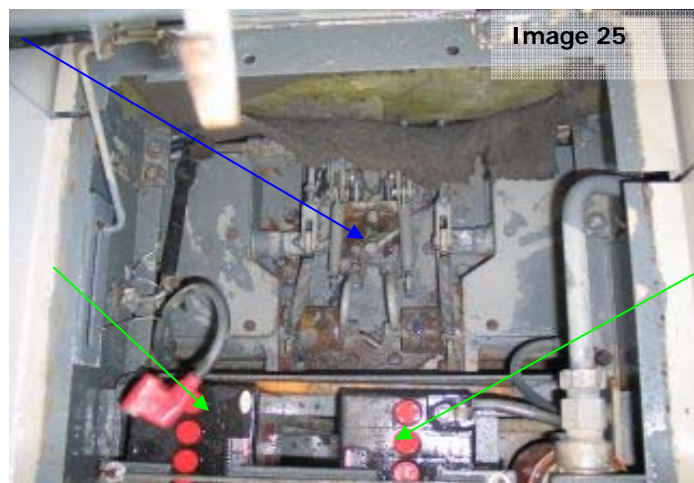


Image 25:

The batteries (green arrows) must be loosened from the tie down points to allow cleaning and inspection of the underside. All internal surfaces must be clean and free of all contamination.

5. General



Image 26:
All looming around hydraulic and electrical cables is to be verified free of contamination.



Image 27:
All wiring harnesses are to be cleaned and checked for any contamination.